



MEACOCK & JONES

4 Bedrooms

House - Terraced

Located in Hutton

**Guide Price £600,000
- £650,000**



enquiries@meacockjones.co.uk

www.meacockjones.co.uk

01277 218485

9 Paglesfield Hutton

Brentwood | Essex | CM13 1BQ



****Initial offers invited in region of £600,000 - £650,000**** A most appealing and beautifully presented four double bedroom terraced house, situated in a quiet and highly desirable cul-de-sac just 0.6 miles from Shenfield shopping Broadway and mainline railway station, providing fast and convenient access into London, including the Elizabeth Line. This family home has been finished to a high standard and offers generous living space throughout. It also falls within the sought-after St Martin's School catchment area.

A bright and spacious entrance hall with wood-effect flooring and understairs storage leads to the formal dining room, where a front-facing window creates a light and inviting setting. The dining room flows seamlessly into a well-proportioned lounge, centred around a charming log burner with an oak mantel as a focal point. French doors open directly onto the rear garden. The modern Shaker-style kitchen is beautifully appointed with a comprehensive range of base units, drawers, and matching wall cabinets, all complemented by contrasting wooden worktops. A practical breakfast bar provides the perfect spot for casual dining, while a selection of integrated appliances includes a fridge-freezer, dishwasher, oven, and gas hob. Adjoining the kitchen is a useful utility room, offering additional appliance space and further storage. The ground floor accommodation is completed by a convenient shower room.

From the galleried landing, doors lead to four double bedrooms, two of which benefit from floor-to-ceiling wardrobes providing excellent storage. The family bathroom is fitted with a bath with overhead shower and a glass shower screen.



9 Paglesfield

£600,000 Freehold

- Four Double Bedrooms
- Dining Room
- Downstairs Shower Room
- 0.6 Miles to Shenfield Broadway and Station
- Excellent Location
- Modern Shaker Style Kitchen
- Living Room
- Beautifully Presented Throughout
- St. Martins School Catchment Area







APPROX INTERNAL FLOOR AREA
116 SQ M 1251 SQ FT

MEACOCK & JONES

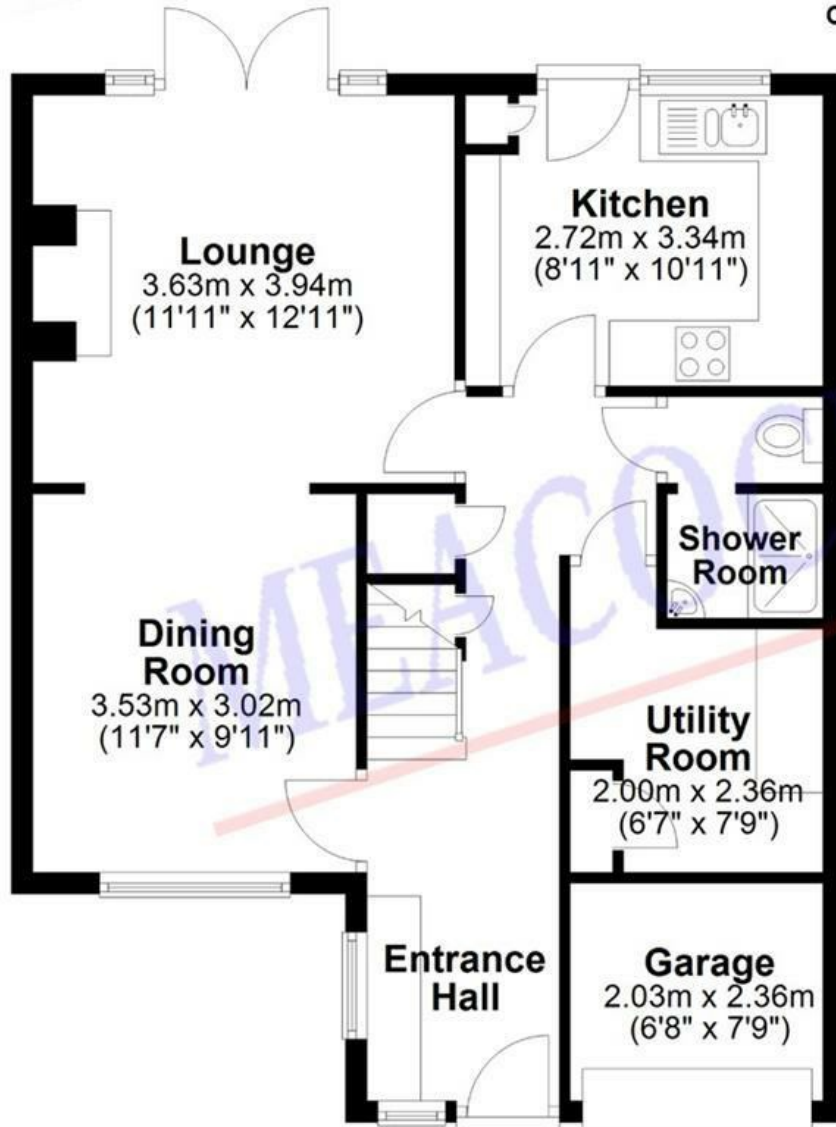
Ground Floor

This plan is for layout guidance only and is
NOT TO SCALE

Whilst every care is taken in the preparation
of this plan, please check all dimensions,
shapes & compass bearings before making
any decisions reliant upon them.

Copyright Meacock & Jones

First Floor



Created by

efficient
property
marketing

Accommodation Comprises of:-

Entrance Hall

Dining Room

11'7 x 9'11

Lounge

11'11 x 12'11

Kitchen

8'11 x 10'11

Shower Room

Utility Room

6'7 x 7'9

First Floor Landing

Bedroom One

11'6 x 9'11

Bedroom Two

12' x 9'11

Bedroom Three

12' x 7'11

Bedroom Four

11'6 x 7'11

Family Bathroom

Rear Garden

Front Garden - Driveway for 3 vehicles

Garage

6'8 x 7'9

MEACOCK & JONES

106 Hutton Road

Shenfield

Essex

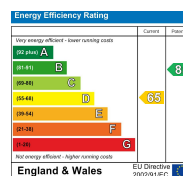
CM15 8NB

01277 218485

enquiries@meacockjones.co.uk

Council Tax Band: E

Local Authority: Brentwood



Whilst care has been exercised in the preparation of these particulars, statements about the property must not be relied upon as representations or statements of fact. Prospective purchasers must make and rely upon their own enquiries and those of their professional representatives. All measurements, areas and distances given are approximate. We have not tested any apparatus, equipment, fixtures, fittings or services and so cannot verify they are in working order. Any fixtures or fittings detailed in these particulars are not necessarily included in the sale price and Meacock & Jones and their staff accept no liability for any errors contained therein.

ZOOPLA

rightmove

onTheMarket.com

The Property Ombudsman

tsj APPROVED CODE TRADINGSTANDARDS.GOV.UK

naea | propertymark PROTECTED



www.meacockjones.co.uk